

**Delamere Road
West Wimbledon, SW20 8PS**

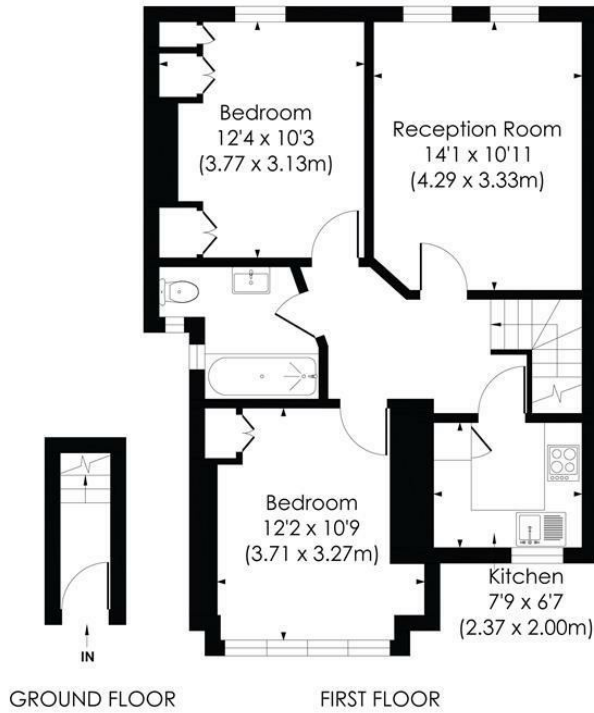
£500,000 Leasehold - Share of Freehold



This spacious and beautifully presented TWO DOUBLE BEDROOM, First floor Victorian Maisonette is perfectly located for both Raynes Park and Wimbledon High Street and Stations. There is a modern kitchen and bathroom, two good sized bedrooms and a spacious reception room. Offered to the market with no onward chain and a share of freehold. There is also access to the loft space that subject to consents and planning permission could potentially be extended.

DELAMERE ROAD, SW20

Approx. Gross Internal Floor Area
629 Sq. ft/58.45 Sq. m

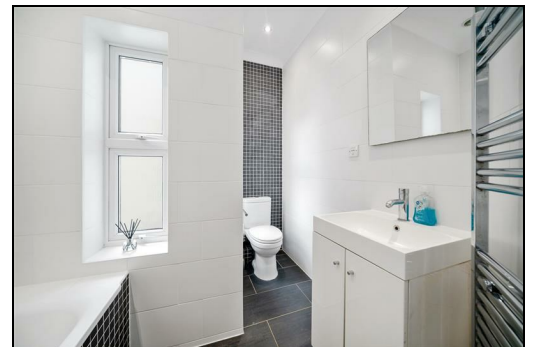


© Pixangle Property Marketing Ltd. info@pixangle.com Tel: 0208 870 2118



This floor plan has been prepared for the purpose of illustration only in accordance with the latest RICS code of measuring practice and is not to scale. All measurements and areas are approximate and whilst every effort has been made to ensure the accuracy of the plan contained here, no responsibility is taken for any error, omission or misstatement.

- Two Double Bedroom Victorian Maisonette
- Share Of Freehold
- Chain-Free
- Modern Kitchen And Bathroom
- Beautifully Presented Throughout
- Close To Raynes Park Station And Shops
- Close To Wimbledon Station And Shops
- Loft Space - Currently Used As Storage
- EPC - C
- Council Tax Band - D



Energy Efficiency Rating		Current	Potential
Very energy efficient - lower running costs			
(92 plus)	A		
(81-91)	B		
(69-80)	C		
(55-68)	D	71	78
(39-54)	E		
(21-38)	F		
(1-20)	G		
Not energy efficient - higher running costs			
England & Wales		EU Directive 2002/91/EC	

For Free Mortgage Quote and Best Mortgage Rates, call Ellisons Mortgage Advisor on 0208 944 9595



Although these particulars are believed to be correct, their accuracy is not guaranteed and they do not form part of any contract.

Celebrating 30 years of successful Sales and Lettings in Merton

